

'08



SILVERTON®
MARINE CORPORATION

AN EMPLOYEE OWNERSHIP COMPANY

Evolving · Excelling · Leading



A 1950's lapstrake sea skiff built by Henry Luhrs



John Luhrs



Henry Luhrs (middle) in the 1950's



Warren Luhrs

VISION

It all started on a cold December day in 1969, when John and Warren Luhrs established Silverton Marine Corporation. In less than 40 years, our yachts have become prized throughout the world. The company has been able to preserve a tradition of craftsmanship while its competitors have yielded to influences contrary to product quality and dependability. It has risen above its early image as a manufacturer of cheap boats to become the acknowledged value leader in its class.

Silverton accomplished this success by listening to its owners' preferences. By the continual investment in new construction technology, in sophisticated design and manufacturing equipment, in facilities, and in people with the same passion to excel that spurred John and Warren Luhrs. The company has come to be recognized as a premier mid-sized bridge-boat builder, whose day-in and day-out dedication has achieved unsurpassed performance, comfort, and value.

Silverton is committed to the notion that the achievement of product excellence is not an impossible task, but rather one that can be accomplished by progressive management in collaboration with dedicated dealers, manufacturing partners, and owner-employees. We also subscribe to the idea that successful product lines are not fixed and unchanging, but evolve in response to changes in technology, boating habits, and owners' wishes. At Silverton, we are evolving, excelling, and leading!

EVOLVING

Silverton boat owners are in continuous collaboration with our design and engineering team. Together, they combine actual on-water experience and professional expertise to produce boats of uncommon utility and versatility.

The Silverton evolution is fueled by new construction technologies, design advancements spurred by Pro-Engineering software, a supplier organization challenged to meet the most rigorous standards, impassioned dealers with the experience and service facilities equal to the demands of some of the world's finest yachts. Evolution is assured by constant product refinement and a commitment to manufacture and support boats of enduring value.



SideWalk® flybridge-to-foredeck passage

EXCELLING

It is one thing for a company to claim that its products are more reliable, better built, and better supported than any competitor's. It is another to demonstrate – by design, manufacturing, craftsmanship, and service – that its products excel.

Silverton has always excelled in the imaginative use of space. At conceiving innovations like the SideWalk® flybridge-to-foredeck passage. At state-of-the-art boatbuilding techniques including the unitized construction of subassemblies and strict quality assurance practices involved in water-testing every boat. Silverton's pursuit of excellence continues with its commitment to handcrafted joinery of furniture-grade cherry-wood solids and finishes, bluewater hull design along with other examples of New Jersey boatbuilding craftsmanship. All this – in combination with a select group of only the most qualified dealers – ensures complete customer satisfaction.

LEADING

Innovations in design, manufacturing, customer service, and product value are the measures of leadership in our industry. And ultimately, the standards by which customer satisfaction is gauged.

By these criteria, Silverton is leading. To pay less for something that proves a disappointment is – in the long run – as unacceptable as having paid too much for it. To be satisfied with a purchase and the price paid for it – this is Silverton's definition of value.

Leadership has its obligations. Silverton's is to build boats that people will be proud to own. Pride of ownership is, ultimately, the greatest value any company can deliver. Silverton's pride is to deliver that value consistently.



Manufacturing facility in Millville, New Jersey



In August 2006, Silverton launched a version of its 50 Convertible equipped for competitive sportfishing...the 50T-Series...

PRODUCT EXCELLENCE IS BUILT BY DESIGN

Thousands of parts and components are installed during the assembly of our yachts to achieve an integrated, unitized construction. Significant differences in fabrication, construction, assembly techniques, and the quality of componentry distinguish us and contribute to the unsurpassed value of a Silverton.



IN THE 'GLASS ROOM.' To begin at the bottom, our bluewater hulls are laminated with solid fiberglass. A vinylester-resin layer is added to virtually eliminate osmotic blistering. No coring material is used below the waterline. Marine-grade plywood stringers are hand-laminated to the hull, then gel-coated, to form an integrated, practically waterproof system. All limber and wire-chase holes are framed in closed cell foam to prevent water penetration. Bulkheads are "glassed" to the hull – not, as is sometimes the case, puttied. Bottom paint is standard on every model.

IN THE METAL SHOP. Unlike the pieced bow rails of some other boat manufacturers, ours are fusion-welded, buffed and polished. Only oversized 316L stainless steel is used. Precise welds ensure strength, as well as beauty. Heavy-duty locking fasteners, with backing plates, secure threaded studs on all rails to the deck or house.

Aluminum backing plates are bonded into the deck and hull areas to provide additional strength at attachment points for all hardware. All exterior aluminum is powder-coated.

Silverton models 38' and above feature powder-coated steel I-beam engine beds, which help to isolate vibration noise and make periodic engine alignment easier. Diesel engines are "handed" on these models. All engine mounts, in every boat we build, are through-bolted.



IN THE WOODSHOP. Silverton's 45C and 50C compare favorably with more expensive custom yachts, in part because of their raised-panel cabinets and doors, beautifully crafted in cherry wood. We use stylish, durable European recessed 35-mm hinges exclusively on every model. Built-in furniture is bonded to the hull or stringer system for superior strength.

We construct our drawers of cherry wood or cherry-finished fronts, nine-ply birch sides and bottoms. While more expensive to fabricate, our corrosion-resistant drawer slides are epoxy-coated aluminum with nylon rollers for effortless, reliable use. All cabinets are drilled, glued, and screwed. Cabinet seams are tongue-and-groove jointed.

Galleys and heads feature carefully crafted, extremely durable, and strikingly beautiful Corian® counters.

IN THE ASSEMBLY AREA. Hull and deck flanges are carefully formed to mate perfectly. Before bolting them together on 6" centers, we insert elastomeric sealant and butyl tape. The seal is protected by a high-impact rubrail with a stainless-steel insert. Wherever possible, the flange is fiberglassed for additional reinforcement.

Cleats and deck hardware are secured using stainless-steel bolts, fastened into glassed-in backing plates or oversized fender washers with locking nuts. This assembly provides superior strength and excellent serviceability.



Underwater gear is bonded. Standard isolation transformers minimize electrolysis and stray electrical currents. Rudders and struts are made of manganese bronze. Depending on the engines, props are bronze or Nibral on sealed, dripless shafts. The result is a steering system more resistant to propulsion load and deflections.

Silverton's sturdy, frameless window systems, with screens, can be opened for natural ventilation. In consideration of owners' safety, we use only tempered safety glass instead of Plexiglas or ordinary tempered glass.

Exterior seating is custom built of only the finest materials. Top-grade marine vinyl is treated with Prefixx® to retard mildew and ultraviolet damage. Multiple layers of high-density foam ensure comfort. Highest-grade anodized aluminum combines superior strength and beauty. Exterior upholstery is also reinforced with Starboard, a polymer board, which cannot rot or weaken with age.

SILVERTON DEALERSHIPS. We choose our dealers carefully. They must meet rigorous standards of professionalism, experience, and service proficiency. Their personnel must be trained in our boats and their systems, and have access to the necessary equipment to provide prompt, competent maintenance and repair. Each Silverton dealer is a valued partner in our success.

SILVERTON ARMOR PROTECTION™... BEST IN CLASS

Silverton is not only intent on building better boats, we are determined to back them better than any other manufacturer in our class. For the 2007 model year, we introduced the industry's strongest, most comprehensive warranty: Silverton Armor Protection.™ It is a warranty of real value – a significant asset during ownership, which contributes in many cases to a Silverton's exceptional resale value. The three cornerstones of our new warranty are:

TWO-YEAR STEM-TO-STERN LIMITED WARRANTY

Silverton warrants to original and subsequent owners within the warranty period the workmanship of every part manufactured by us for our 2007 models purchased from authorized Silverton dealers for 24 months, provided the part has been properly used and maintained. If manufacturing defects are found, the part will be repaired or replaced at our expense. This warranty is fully transferable.

PRORATED FIVE-YEAR BLISTER WARRANTY

Silverton warrants that its 2007 models will be free from exterior hull blisters on underwater gelcoat surfaces for five years from the boat's delivery to the original owner, provided the hull has been properly used, maintained, and stored. Authorized Silverton dealers will be reimbursed for bottom-blisters repairs made on the owner's behalf as follows: 100% during the warranty's first two years; 75% during its third year, 50%, fourth year; 25%, fifth and final year. This warranty is fully transferable.

LIFETIME HULL-AND-DECK LIMITED WARRANTY

1. Lifetime Limited Warranty Coverage to First-Use Purchaser (Non-Transferable): Silverton warrants to the first-use purchaser, who is not a corporation, limited liability entity, partnership or business entity, that the hull and deck of each boat will be free from structural defects in fiberglass materials and workmanship for the lifetime of the hull beginning with the date of delivery.

2. Five-Year Limited Warranty Coverage (Transferable to Subsequent Registered Owner): Silverton warrants to the first-use purchaser and any subsequent registered owner during the warranty period that the hull and deck of each boat shall be free from structural defects in fiberglass materials and workmanship for a period of five years from the date of delivery to the first-use purchaser and subsequent registered owner under normal use and service.

A complete copy of the Silverton Armor Protection™ Warranty is available at www.silverton.com or from your local Silverton dealer.



BETTER-BUILT... BETTER-BACKED
... for a LIFETIME.™



45^c

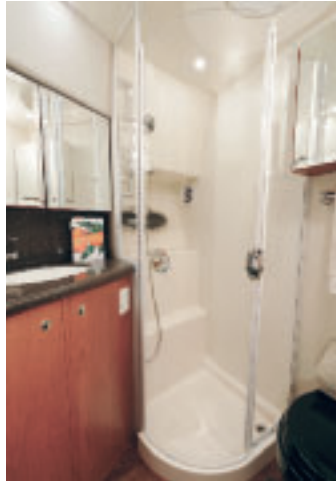
PERFECT FOR BOATERS WISHING TO ENJOY THE COMFORTS OF A TRUE YACHT

Here is a yacht with the twin diesel-engine speed and beamy stability to challenge rough seas and distance.

From the roomy cockpit to the sun-padded foredeck to an imposing bridge – she is the realization of the voyager’s desire to experience the world at its most exciting. An electronically actuated helm console, opening to access the electronics, is one instance of our engineers’ desire to create the perfect boat. Fitted with cherry wood joinery, bulkheads, and doors, the yacht’s interior is luxurious and genial with natural light. The main-

deck cabin features a convertible L-lounge and settee. The galley has Corian® countertops and modern appliances. On the lower deck, three generously furnished staterooms accommodate a pair of travelers each, with double berths and ample storage. The master stateroom has a private head. A second head with stall shower serves the guests, whose staterooms are unusually spacious. For those who want to cruise in comfort – secure in the knowledge that they have acquired a yacht of incomparable value for much less than they thought possible – the extraordinary Silverton Forty Five Convertible awaits them.





45C STANDARD EQUIPMENT

DECK FEATURES

AM/FM Single CD Stereo – Flybridge
Anchor Locker
Anchor Roller w/Flange
Bow Pulpit
1 1/4" Bow Rails
316L Stainless Steel Hardware
Cockpit Access to Engine Room
Cockpit Storage Locker
Courtesy Lighting
Dockside Water Connection
Flybridge Handrails – 1 1/4" Stainless Steel
Flybridge Hardtop w/Spreader Lights – Fiberglass
Flybridge Seating for 8
Flybridge Storage
Hot and Cold Transom Shower
Molded-In Diamond Non-Skid
Molded-In Steps to Flybridge
Mooring, Quarter and Spring Cleats
Stainless Steel Steering Wheel
Tempered Safety Glass
Walk-Thru Transom Door

CABIN AMENITIES

Air Conditioning – 3 Zones
Bose® Lifestyle®18 Series II A/V System – Salon
Carbon Monoxide and Fume/High Water Detectors
Corian® Countertops
Custom Blinds/Pleated Shades
Designer Draperies
Designer Bed Spreads
Designer Accent Pillows
Entertainment Center
Flexsteel® Sofa w/Storage and Incliner
26" Flat Panel TV – Salon
Innerspring Mattresses – Master and VIP Guest Staterooms
Opening Windows w/Screens
Overhead Hatches w/Screens
100% Nylon Scotchgard® Protected Carpeting
Solid Cherrywood Passageway Doors, Cabinets and Drawer Face Frames
Telephone/Cable TV Hook-ups
UltraLeather™ Sofa & Dinette
Wardrobe Lockers (4)

ELECTRICAL EQUIPMENT

AC/DC Converter
Accessory Wiring on Bridge
Batteries – Deep Cycle Marine
Circuit Breakers (12V)
Circuit Breakers (120V)
Color-Coded, Identified, Harnessed Wiring System (12V)
Dockside Electrical Connection w/Cord – (1@50 Amp – 240V)
Electronic Controls w/Digital Synchronizer Generator – 10 EOZD Diesel w/Sound Shield
GFCI System
Glomex® TV/FM Antenna
Lighting – Interior (12V)
Lighting – Courtesy (12V)
Lighting – Zoned Controls
Lights – Navigation (COLREGS)
Polarity Indicators
High Quality Tinned Stranded Copper Wiring

SAFETY EQUIPMENT

Anchor and Rode
Anti-Fouling Bottom Paint
Ball Valves on Underwater Thru-Hulls
Battery Safety Switches
Battery Safety Trays
Boat Hook
Bonding System
Carbon Monoxide Detector (3)
Compass
Dock Lines
Dual Horns
Engine Alarms
Fenders w/Lines
Hand-Held Fire Extinguishers (USCG Approved)
Fire Extinguishing System
Flare Kit
Flotation Device (Person/Throwable)
Fog Bell
Life Vests (USCG Approved)
Parallel Start Switch

MECHANICAL

Acoustic and Thermal Insulation
Bow Thruster
Dripless Shaft Seals
Dual Lever Throttle and Transmission Controls
Engine Room Lighting
Engine Exhaust Mufflers
Fresh Water Cooled Engines
Fuel Gauge – Electric
Fuel Lines – Flexible USCG Type 1
Fuel Tank(s) – 5052 Aluminum w/Baffles
Fuel/Water Separators
Holding Tank w/Dockside and Overboard Discharge
Macerator Pump
Manganese Bronze Rudders
Manganese Bronze Struts
Power-Assist Steering
Propellers
Pressurized Water System
Shower Sump Pump (Auto)
Stainless Steel Propeller Shafts
Structural Steel Engine Beds
Trim Tabs
Underwater Exhaust
Water/Holding Tank Monitors

GALLEY

Corian® Countertops
Exhaust Fan
Microwave/Convection Oven
Mirage® Hardwood Flooring
Range – 3 Burner Electric
Refrigerator/Freezer (110V-12V)

HEAD

Corian® Countertops
Designer Faucets
Exhaust Fan
Extra Storage
Medicine Cabinets
Mirage® Hardwood Flooring
Two Heads w/Enclosed Stall Showers
VacuFlush® Heads
Waterproof Outlets

OPTIONAL EQUIPMENT

Cool Air Helm – Flybridge
AM/FM Single CD Stereo w/Sub and Amp – Flybridge
AM/FM Single CD – Staterooms
Anchor Windlass
Anchor Windlass Chain
Bose® Lifestyle® 38 A/V System – Salon
CD Changer – Sony® 10 Pack – Flybridge/Staterooms
Central Vacuum System
Cockpit Coaming Pads
Cocktail Table (Hi-Lo) – Salon
Colored Bottom Paint
Colored Gelcoat – Hull
Davit – Foredeck
Electric Grill – Cockpit
Electronics Packages
Emergency Bilge Valve
Exterior Carpet
Flybridge Enclosure w/EZ2CY Center Panel
Flybridge Hatch
Fishpak w/Livewell
Freezer – Cockpit
Generator – 13 EOZD Diesel w/Sound Shield
Glendinning Cablemaster w/Remote
Helm Lift – Electric
Icemaker – Cockpit
Interior Carpet Runners
Incliners in Lieu of Storage

OPTIONAL EQUIPMENT continued

Interior Lighting Group w/Remote
Interior Upgrade
Inverter
Linen Package
Mirage® Hardwood Flooring – Companionway and Forward Stateroom
Oil X-Change-R® System
Refrigerator – Cockpit
Refrigerator – Flybridge
Refrigerator/Freezer Drawers – VitriFrigo®
Remote Spotlight
Satellite TV System
Sleeper Sofa in Lieu of Storage
Smart Y
Swim Platform w/Ladder
Teak Decking
15" Flat Screen TV w/DVD – Staterooms
Washdown – Fresh Water – Cockpit
Washdown – Fresh Water – Bow
Washdown – Raw Water – Cockpit
Washer/Dryer
Water Heater – 20 Gallon

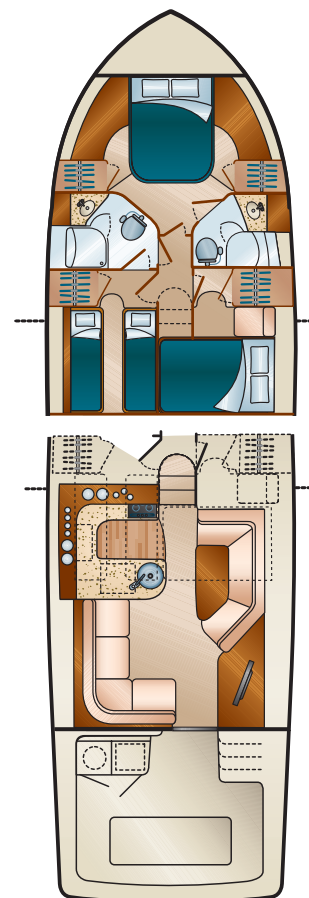
SPECIFICATIONS

Length Overall (w/o Swim Platform)	47'8"	14.53 m
Beam	15'4"	4.67 m
Draft	41"	1.04 m
Deadrise	13°	
Approx Weight (Dry)	42,048 lb	19,073 kg
Fuel Capacity	607 gal	2,298 L
Water Capacity	120 gal	454 L
Holding Tank Capacity	72 gal	273 L
Headroom	6'8"	1.98 m
Sleeping Capacity	6-8	
Clearance Ht – (DWL no light)	16'10"	5.13 m

POWER OPTIONS - DIESEL

Twin Volvo D-9	500 HP	373 KW
Twin Volvo D-9	575 HP	429 KW
Twin Volvo D-12	715 HP	533 KW

Optional generator may not power all systems concurrently. Photographs and floorplans may contain options or other features not covered by the base price. Silvertone reserves the right to make changes to standard or optional equipment list or to what is shown in visual representations of its models in advertising and sales materials. Silvertone may do so at any time and without prior notice. Silvertone also reserves the right to make such changes without incurring any obligation.



DECOR

A yacht assumes a distinct personality, in part, by the interior stylist's selection of fabrics, upholstery, and wall coverings. Silverton models are distinguished by the choicest materials crafted by hand into upholstered furnishings, valance panels, bedding, and pillows.



STANDARD

Our yachts are treated to a Standard Decor that reflects popular trends in color and fabrics. Unlike a “factory interior,” Silverton Yacht interiors are the result of an investment in a professional design team, whose Standard and Custom Decors create a space of reflection, refinement, and pleasure for the senses.

INTERNATIONAL

Silverton Yachts are enjoyed around the world. We have created an International Decor Option, whose color scheme and materials have been influenced by the taste of owners living and boating abroad. Available on international boats only.



50 CONVERTIBLE

It is fitting that the largest model in our lineup should feature higher-quality materials more custom in nature. Silverton understands that today's consumer expects an uncommon value and luxurious design at this level. It is our commitment to satisfy our owners' expectations for the superior amenities and furnishings that they desire.

CUSTOM INTERIOR PROGRAM

This program, for our 50' and over customers, allows them to choose among some of today's most desirable color and fabric schemes to express their individuality. Please ask your nearest Silverton dealer for details.

CANVAS

We offer a variety of handsome and durable marine-grade canvas options including standard SEAFLEX® and optional EZ2CY® to provide that perfect finishing touch for your Silverton Yacht.



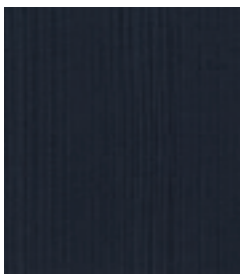
White Stamoid®



Dove Tweed Sunbrella®



Navy Blue Sunbrella®



Black Sunbrella®



42 Convertible Hardtop Enclosure in White Stamoid®



43 Sport Bridge Bimini Enclosure in Navy Blue Sunbrella®



43 Motor Yacht Bimini Enclosure in Dove Tweed Sunbrella®



43 Motor Yacht Aft Enclosure in White Stamoid®



301 Riverside Drive
Millville, NJ USA 08332-6798
P: 856-825-4117 F: 856-825-2064
www.silverton.com

Sales Inquiry Toll-Free Hotline: 877-863-5298
Customer Service Hotline: 800-882-9266

Sales Email: sales@silverton.com
Service Email: service@silverton.com

11/07 - 20M



Winner – NMMA Marine Industry Customer Satisfaction Award



CE Certified Manufacturer



Certified by National Marine Manufacturers' Association



American Boat and Yacht Council Certified Manufacturer